



SIGNA  
AUTOMATA

# Digital Signage Software

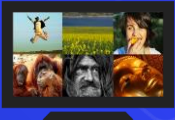


# Overview

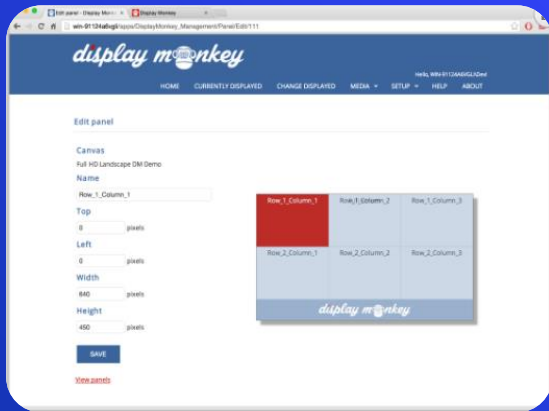


|               | Starts | Ends  | Duration    |
|---------------|--------|-------|-------------|
| Buffet        | 11:00  | 12:00 | 1 hrs 0 min |
| Budget Conf   | 12:00  | 12:00 | 0 hrs 0 min |
| Lunch Meeting | 12:00  | 12:00 | 0 hrs 0 min |
| Review        | 12:00  | 12:00 | 0 hrs 0 min |
| Off Site      | 12:00  | 12:00 | 0 hrs 0 min |

|              |              |              |
|--------------|--------------|--------------|
| John Doe     | John Doe     | John Doe     |
| Jane Smith   | Jane Smith   | Jane Smith   |
| Mike Johnson | Mike Johnson | Mike Johnson |
| Sarah Lee    | Sarah Lee    | Sarah Lee    |
| David Kim    | David Kim    | David Kim    |
| Emily White  | Emily White  | Emily White  |



# Technical Specifications



- Able to manage Digital Signage content flexibly
- Setting running text in digital signage
- Data saved to database server
- Content visualization scheduling settings
- Equipped with security so that not everyone can change the content
- Integrated with Other RFID systems in the Library



## SQL Reporting Services

Show sales, financial or other types of KPI's to display up-to-date information. Unlimited number of SQL Server Reporting Service servers may be connected.



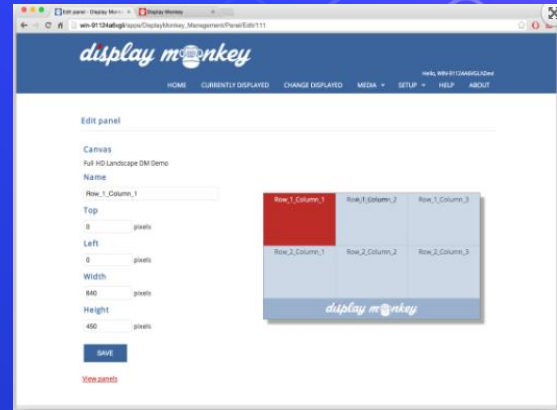
## Youtube

Link your YouTube videos with full control of settings like sound, aspect ratio and video quality



## Video

Upload and share videos. Most common video formats are supported. Play video in full screen or in a user defined panel with or without sound.





## HTML 5

Show sales, financial or other types of KPI's to display up-to-date information. Unlimited number of SQL Server Reporting Service servers may be connected.



## Memo

Enter simple memos which will be displayed in a pre-formatted way. Memo's includes subject line and body section.



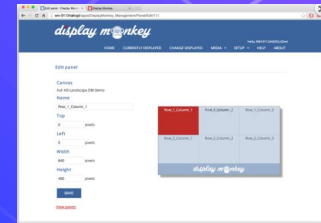
## Hierarchies

You can organize your displays into groups and hierarchies to enable specific content to be shown only in certain location or locations.



## HTML Messages

Use the WYSIWYG HTML editor to create fully customizable messages like a cafeteria menu or a visitors welcome screen.



001

010



## Valid From/To

Any content can be displayed from and to any specific date and time making it easily managed.

| Event         | Starts | Ends  | Duration     |
|---------------|--------|-------|--------------|
| Budget Conf.  | 11:00  | 12:00 | 1 hrs 0 min  |
| Lunch Meeting | 12:00  | 13:00 | 1 hrs 0 min  |
| Private       | 15:00  | 16:30 | 1 hrs 30 min |
| Off Site      | 17:00  | 18:00 | 1 hrs 0 min  |



## Exchange/Outlook

Connect your exchange server and show calendars information like availability outside conference/meeting rooms and offices. Book a meeting room with the Quick Book feature.



## Flexible Layout

Full screen, two or more panels, sizes and placements. You are in total control how information is displayed on screens.



## Location Support

Date and time formatting, weather, current time and more. All based on the displays geolocation for easy management.





## Cache

Display Monkey comes with built in caching functionality to speed up delivery of content and reduce strain on network resources.



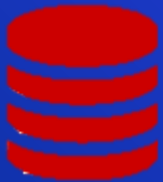
## Technology

Designed and built on the latest web and database technologies. Dot.Net 4.x web server and content stored in MS SQL database makes a robust and cutting edge platform.



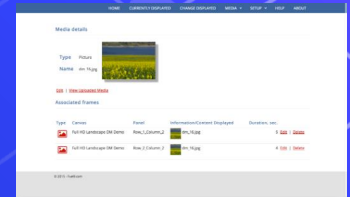
## CSS Templates

Built in support CSS templates that will change look & feel of presentations. Create one or more templates for every type of content.



## Power BI

Connect to Azure/Power BI portal and show your existing Power BI reports and Tiles in hallways and conference rooms.



# DIGITAL SIGNAGE SOFTWARE



- Able to manage Digital Signage content flexibly
- Setting up running text on digital signage
- Data saved to database server
- Content visualization scheduling settings
- Equipped with security so that not everyone can change the content
- Integrated with Other RFID systems in the Library





### SQL Reporting Services

Show sales, financial or other types of KPI's to display up-to-date information. Unlimited number of SQL Server Reporting Service servers may be connected.



### Video

Upload and share videos. Most common video formats are supported. Play video in full screen or in a user defined panel with or without sound.



### Memo

Enter simple memos which will be displayed in a pre-formatted way. Memo's includes subject line and body section.



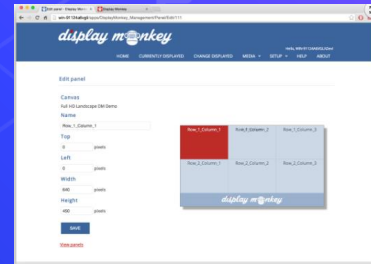
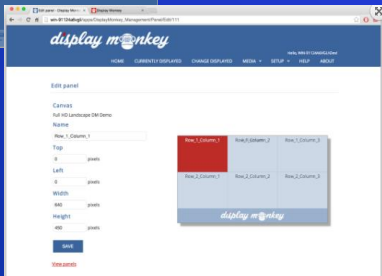
### Hierarchies

You can organize your displays into groups and hierarchies to enable specific content to be shown only in certain location or locations.



### HTML 5

Show sales, financial or other types of KPI's to display up-to-date information. Unlimited number of SQL Server Reporting Service servers may be connected. Use the WYSIWYG HTML editor to create fully customizable messages like a cafeteria menu or a visitors welcome screen.





## Valid From/To

Any content can be displayed from and to any specific date and time making it easily managed.



## Exchange/Outlook

Connect your exchange server and show calendars information like availability outside conference/meeting rooms and offices. Book a meeting room with the Quick Book feature.



## Flexible Layout

Full screen, two or more panels, sizes and placements. You are in total control how information is displayed on screens.



## Location Support

Date and time formatting, weather, current time and more. All based on the displays geolocation for easy management.



## Cache

Display Monkey comes with built in caching functionality to speed up delivery of content and reduce strain on network resources.



## Technology

Designed and built on the latest web and database technologies, .Net 4.x web server and content stored in MS SQL database makes a robust and cutting edge platform.



## CSS Templates

Built in support CSS templates that will change look & feel of presentations. Create one or more templates for every type of content.



## Power BI

Connect to Azure/Power BI portal and show your existing Power BI reports and Tiles in hallways and conference rooms.

| Event         | Starts | Ends  | Duration     |
|---------------|--------|-------|--------------|
| Budget Conf   | 11:00  | 12:00 | 1 hrs 0 min  |
| Lunch Meeting | 12:00  | 13:00 | 1 hrs 0 min  |
| Private       | 15:00  | 16:30 | 1 hrs 30 min |
| Call Site     | 17:00  | 18:00 | 1 hrs 0 min  |



# Innov Digi

65 Chulia Street, Level 46, Suite 3918  
OCBC Centre, Singapore 049513  
marketing@innovdigi.com  
+65 6670 6698

