



Toratumaticia

# Gate Software

# OVERVIEW

Dashboard & Reporting



Database Apps Library  
Management System



RFID Gate

- RFID Reader Setup
- Alarm Setup
- Sound Setup
- Timer Setup
- Counter In and Out

# Technical Specifications

- Able to read RFID books
- Integrating Gate control into the application server
- Save book anomaly data that goes through the gate to the database server
- Integrated with Other RFID systems in the Library





### **RFID Reader Setup**

Determine the number that will be read by the Gantry where this number will be an alarm indicator and the warning light is on



### **Alarm Setup**

Determine the alarm indicator and determine the duration of the alarm that will light up when there is an indicator on the gate that reads according to what has been determined



### **Sound Setup**

Determine the sound that will come out when there is an indicator that is read according to what has been determined





### **Timer Setup**

Determine the duration of the alarm when it sounds and also determine the duration of the light when it is on.



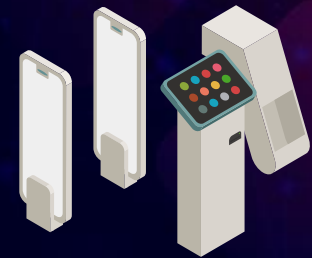
### **Counter In & Out**

The system will count and display the number of guests entering and leaving the library

# GATE SOFTWARE



Dashboard & Reporting



RFID Gate



Database Apps Library Management System

- Able to read RFID books
- Integrate Gate control into application servers
- Save book anomaly data that goes through the gate to the database server
- Integrated with Other RFID systems in the Library
- Alarm Feature Security features to prevent the theft of books

- RFID Reader Setup
- Alarm Setup
- Sound Setup
- Timer Setup
- Counter In and Out



### **RFID Reader Setup**

Determine the number that will be read by the Gantry where this number will be an alarm indicator and the warning light is on.



### **Alarm Setup**

Determine the alarm indicator and determine the duration of the alarm that will light up when there is an indicator on the gate that reads according to what has been determined.



### **Sound Setup**

Determine the sound that will come out when there is an indicator that is read according to what has been determined.



### **Timer Setup**

Determine the duration of the alarm when it sounds and also determine the duration of the light when it is on.



### **Counter in & out**

The system will count and display the number of guests entering and leaving the library.



**Innov Digi**

65 Chulia Street, Level 46, Suite 3918

OCBC Centre, Singapore 049513

[marketing@innovdigi.com](mailto:marketing@innovdigi.com)

+65 6670 6698