



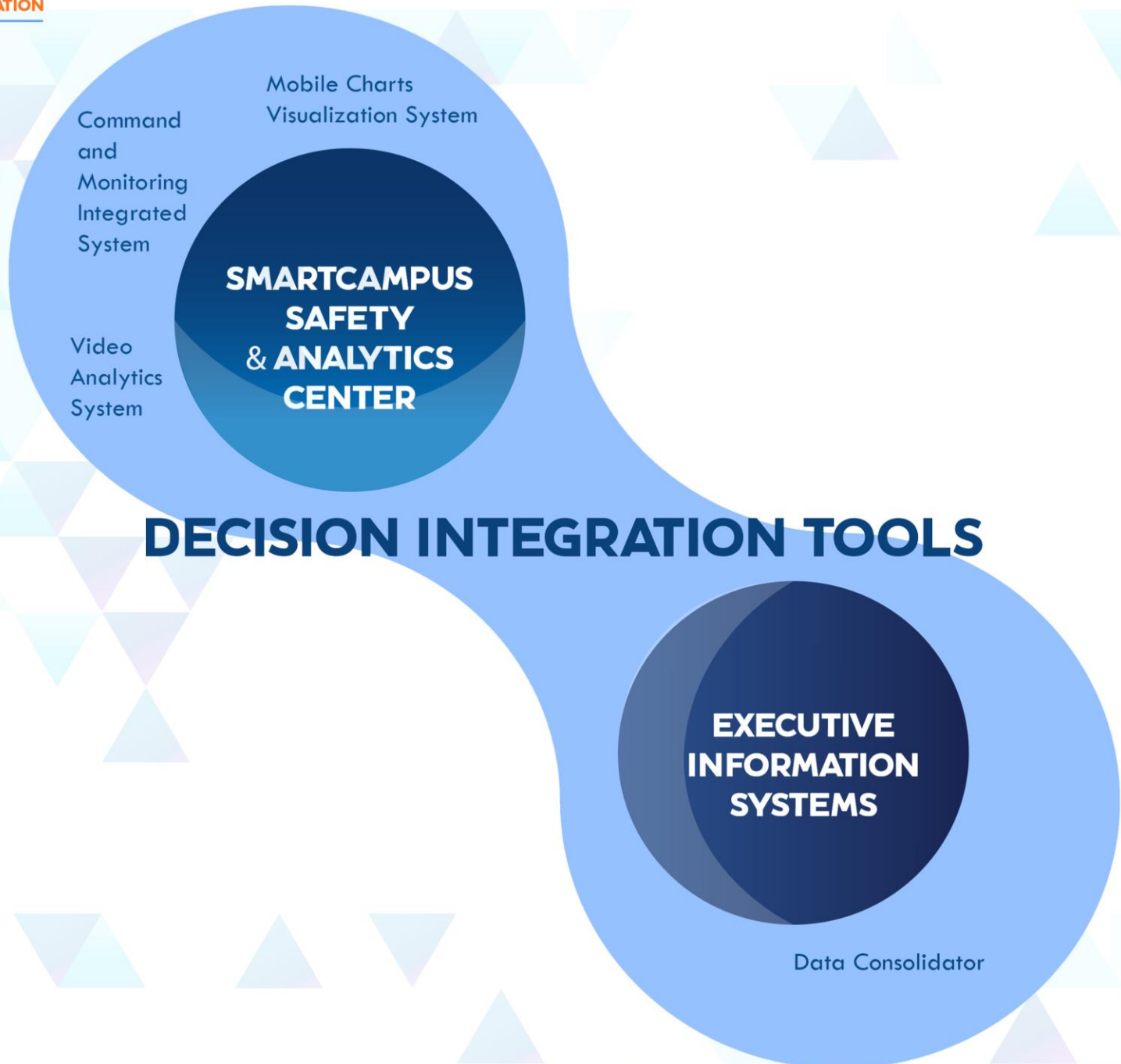
DECISION INTEGRATION  
TOOLS

Smart Application  
To help you

---

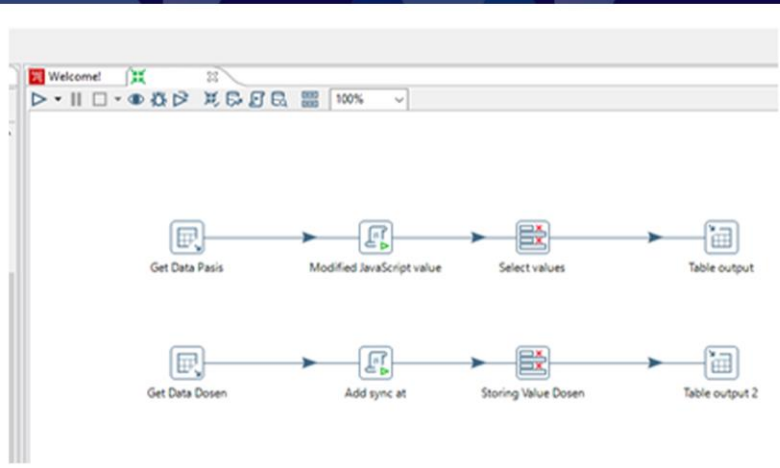
# DECISION INTEGRATION







# WHATS IN DESICION INTEGRATION TOOLS



## EXECUTIVE INFORMATION SYSTEM

- Data Consolidator

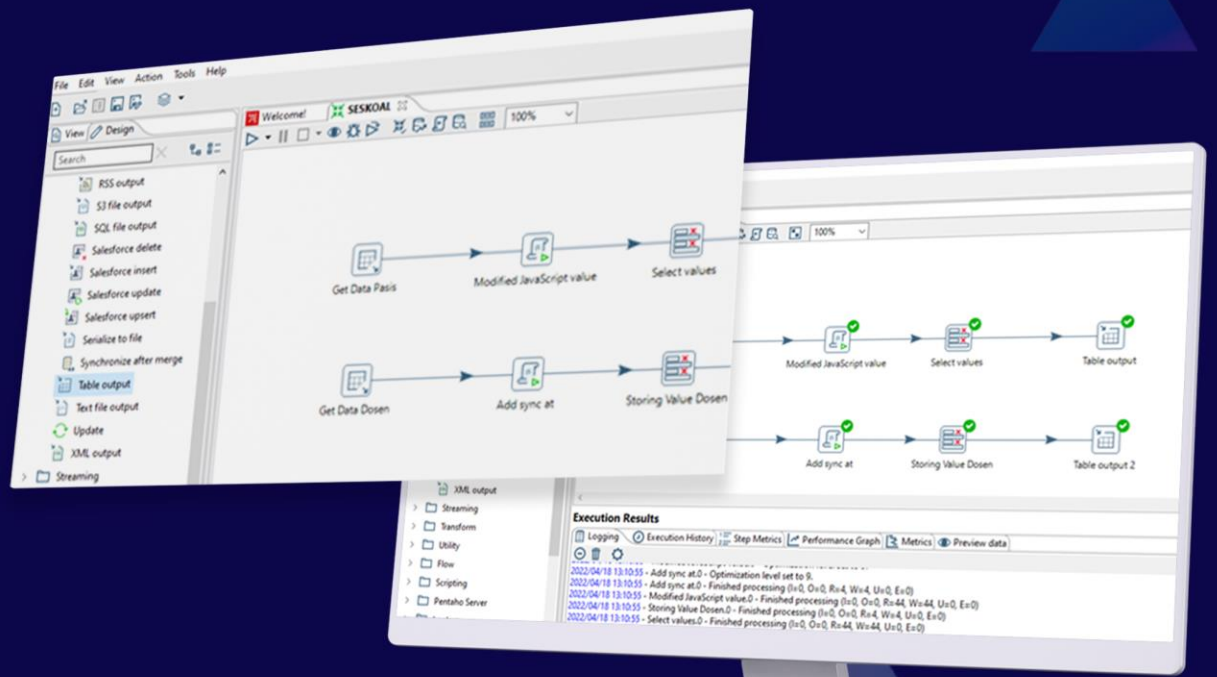
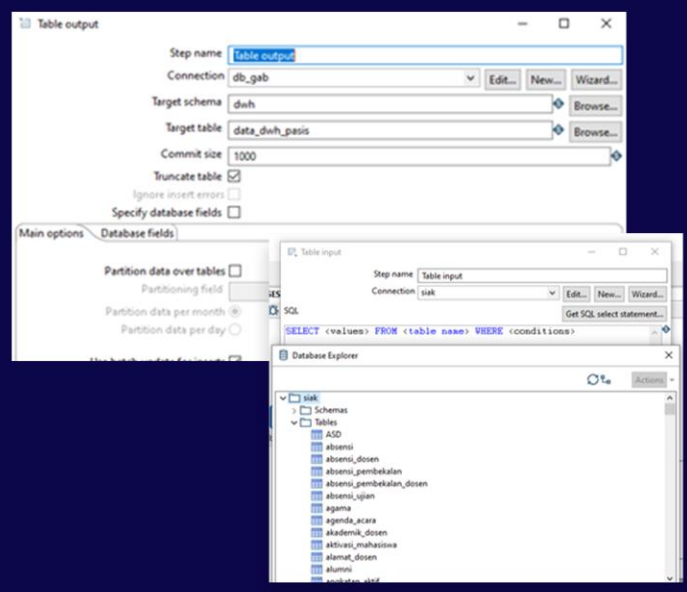
## SMARTCAMPUS SAFETY & ANALYTICS CENTER

- Command and Monitoring Integrated System
- Video Analytics System
- Mobile Charts Visualizations System



# EXECUTIVE INFORMATION SYSTEM

## DATA CONSOLIDATOR

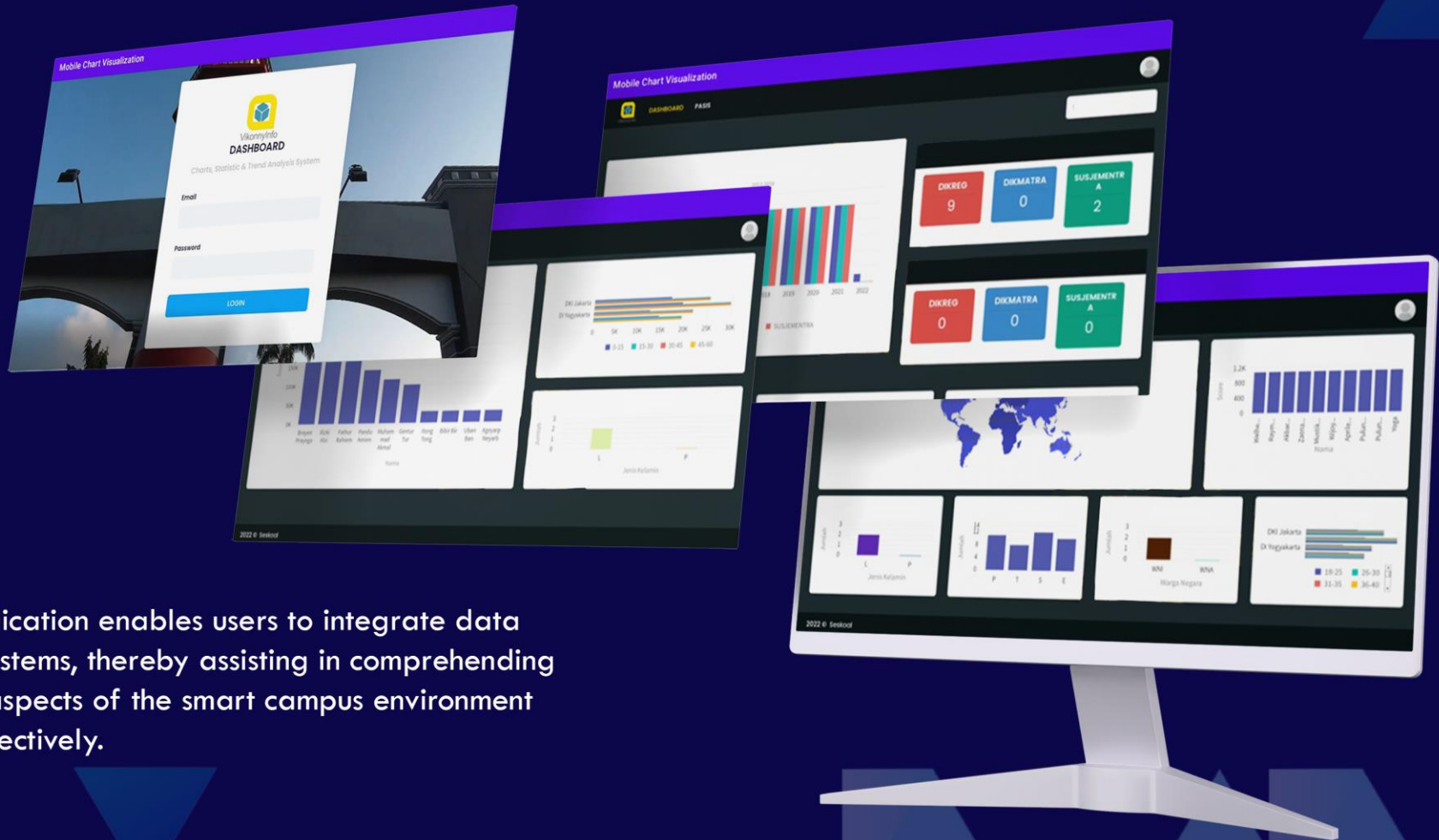


The Data Consolidator Application is software utilized to merge data from multiple systems within the SmartCampus environment.



# EXECUTIVE INFORMATION SYSTEM

## MOBILE CHARTS VISUALIZATIONS SYSTEM



This application enables users to integrate data across systems, thereby assisting in comprehending various aspects of the smart campus environment more effectively.

# SMARTCAMPUS SAFETY & ANALYTICS CENTER

## COMMAND AND MONITORING INTEGRATED SYSTEM

The Command and Monitoring Integrated System is an application that integrates data monitoring with several modules such as:



### Visual Detection Integration Module

This module allows the integration of visual data and the use of CCTV cameras for accurate visual detection.

### Geospatial Integration Module

This module combines data with geospatial elements, enabling more effective monitoring based on physical location.



### **Tables and Reporting Module**

This module enables the creation of tables and data reports, allowing users to analyze information in a more structured manner.

### **Chart Integration Module**

This module monitors areas for early detection of smoke or fire, improving safety.

### **Data Modelling System Module**

This module tracks the number of people in a specific area, useful for traffic analysis and data-driven decision-making.

### **Statistics & Trend Analysis Module**

This module enables the detection of human body movements, which can be used in various interactive applications..

This application allows for advanced video analysis, surveillance, and better decision-making in various contexts, including security, asset management, and behavioral analysis.



# SMARTCAMPUS SAFETY & ANALYTICS CENTER

## VIDEO ANALYTICS SYSTEM

The Video Analytics System application is a platform that utilizes advanced video analysis technology to manage and process video data. This application encompasses various features, including:

### Core System Video Management System License

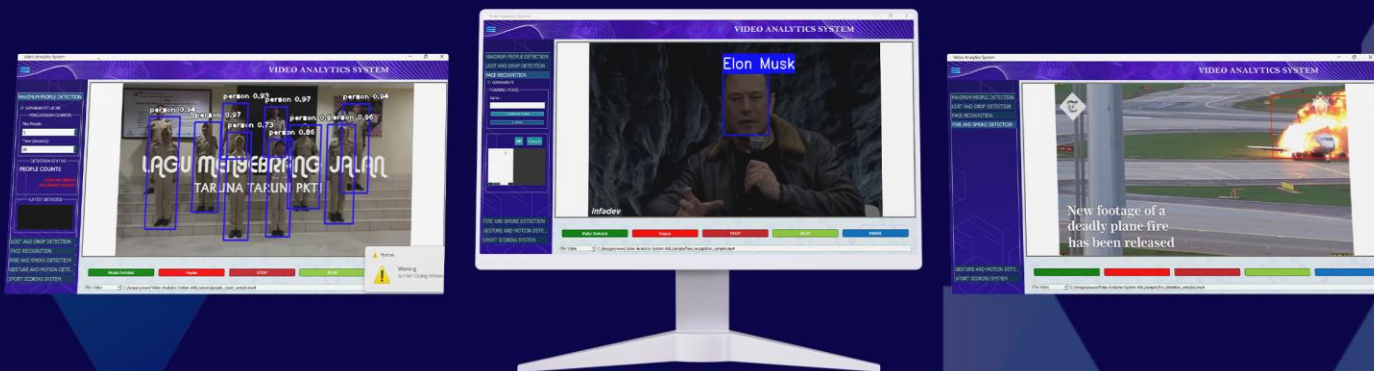
Video management system enabling efficient video management.

### Face Recognition Module

This module uses facial recognition to identify individuals, enhancing security and surveillance.

### Lost & Found Detection Module

This module automatically detects lost or found objects, helping reduce the risk of losing valuable items.







### **Smoke Detection Module**

This module facilitates the representation of data in graphical form, easing comprehension and decision-making.

### **People Counting Module**

This module facilitates data modeling for in-depth analysis and prediction.

### **Gesture Detection Module**

This module supports statistical analysis and trend analysis for better monitoring and understanding of data.

### **Object Detection Module**

This module automatically recognizes objects in the video, enhancing understanding of the surrounding environment.

### **Crowd Detection Module**

This module analyzes and detects crowds of people, useful in surveillance and mass security situations.

### **Motion Detection Module**

This module identifies movement in the video, enabling a quick response to suspicious activities.

With these features, the application provides advanced video analysis capabilities, more effective supervision, and supports better decision-making in various contexts, such as security, asset management, and behavioral analysis.



**INNOV DIGI**

1 Scotts Road #24-10  
Shaw Center, Singapore 228208  
marketing@innovdigi.com  
+65 6871 8972

# DECISION INTEGRATION



DECISION INTEGRATION  
FOCUS